

Attachment A: Lincoln Regional Center (LRC)

RFP XXXX Z1

**Building 14:**













  
WE WILL NEVER FORGET  
SEPTEMBER 11, 2001

EXIT





















**Building 10:**

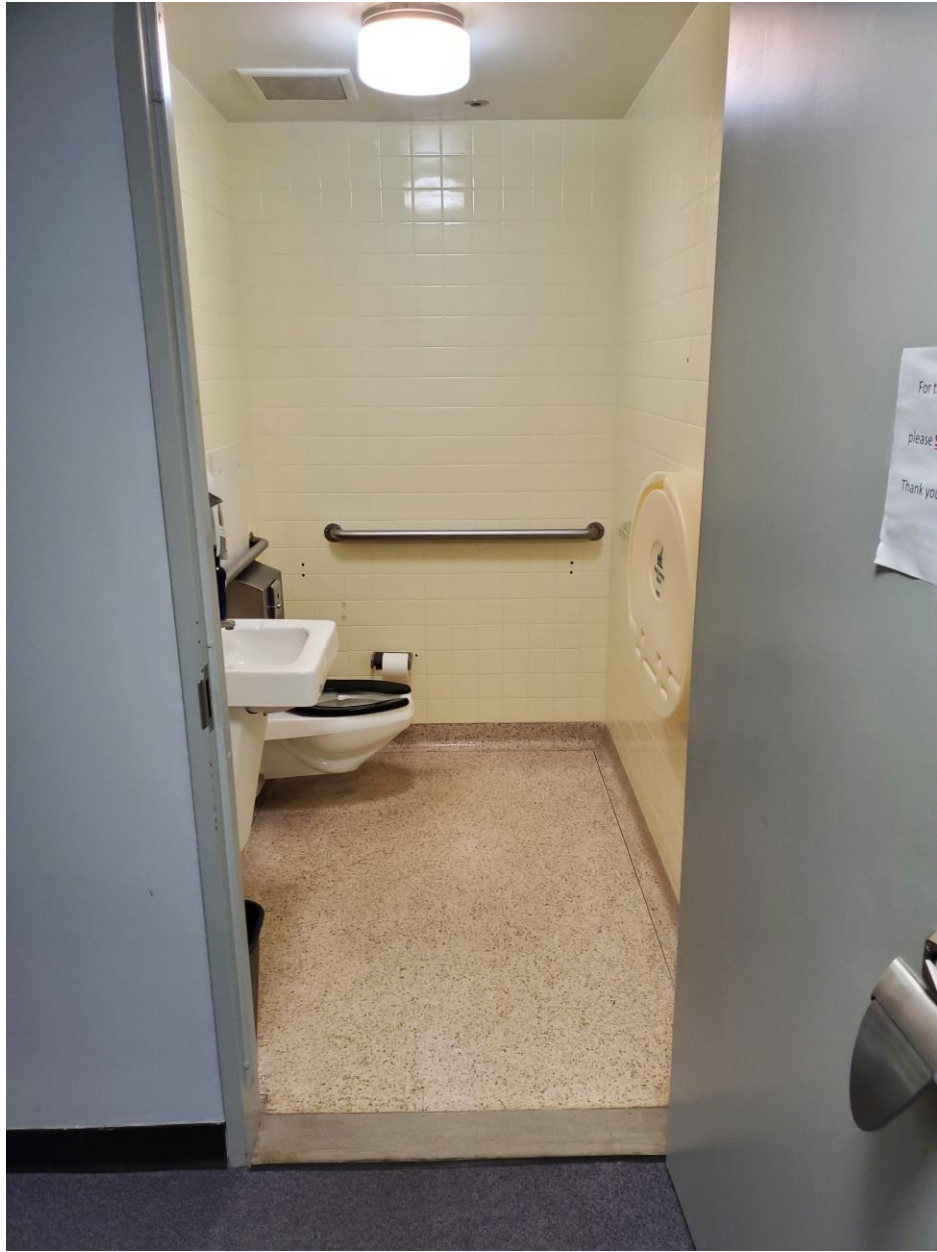




















**Building 5:**





GYM

MAXIMUM  
OCCUPANCY  
NOT TO EXCEED  
99 PERSONS

Notice  
Date: \_\_\_\_\_  
Time: \_\_\_\_\_  
Location: \_\_\_\_\_  
By: \_\_\_\_\_

Stay safe at all times.  
Stay safe at all times.  
Stay safe at all times.  
Stay safe at all times.



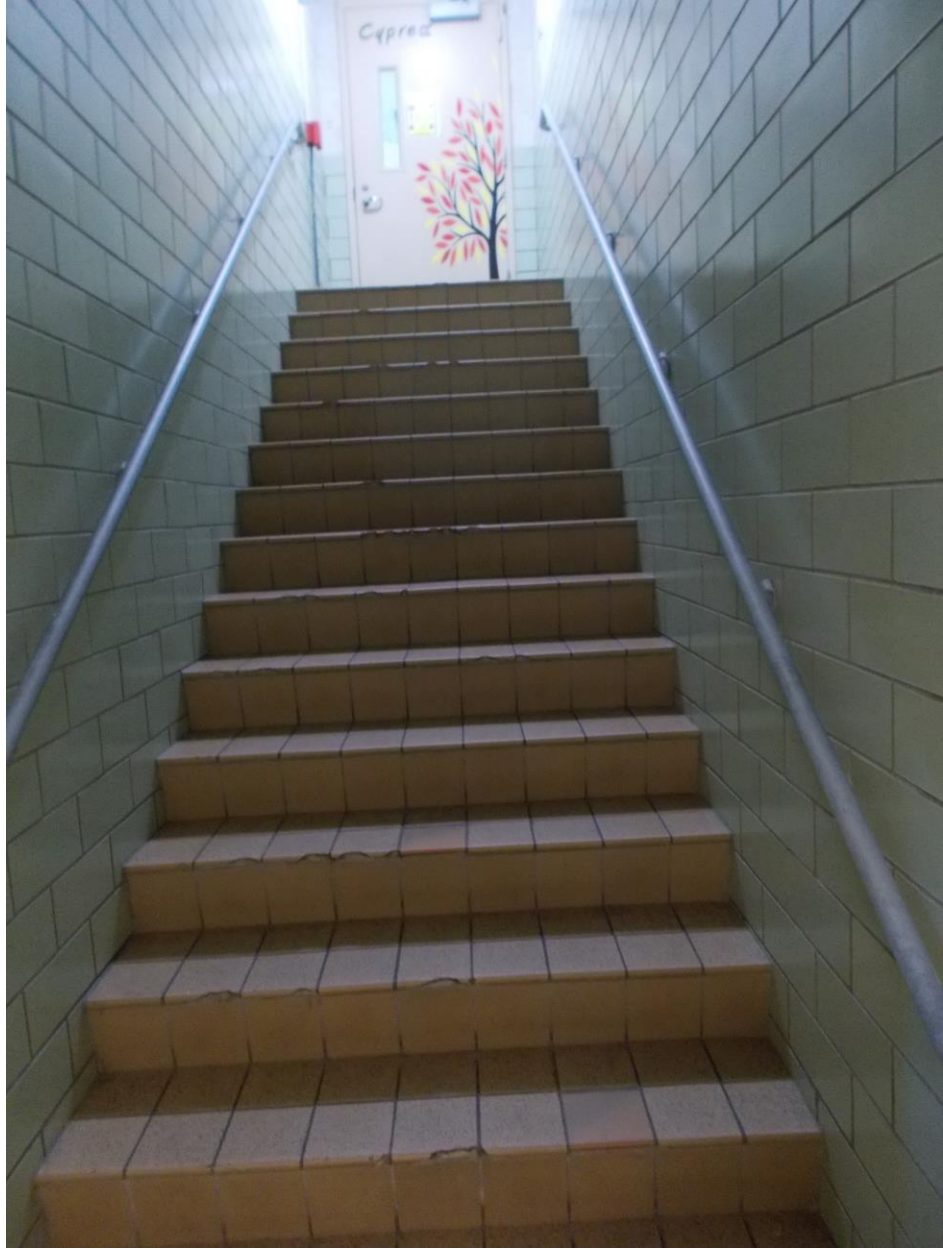










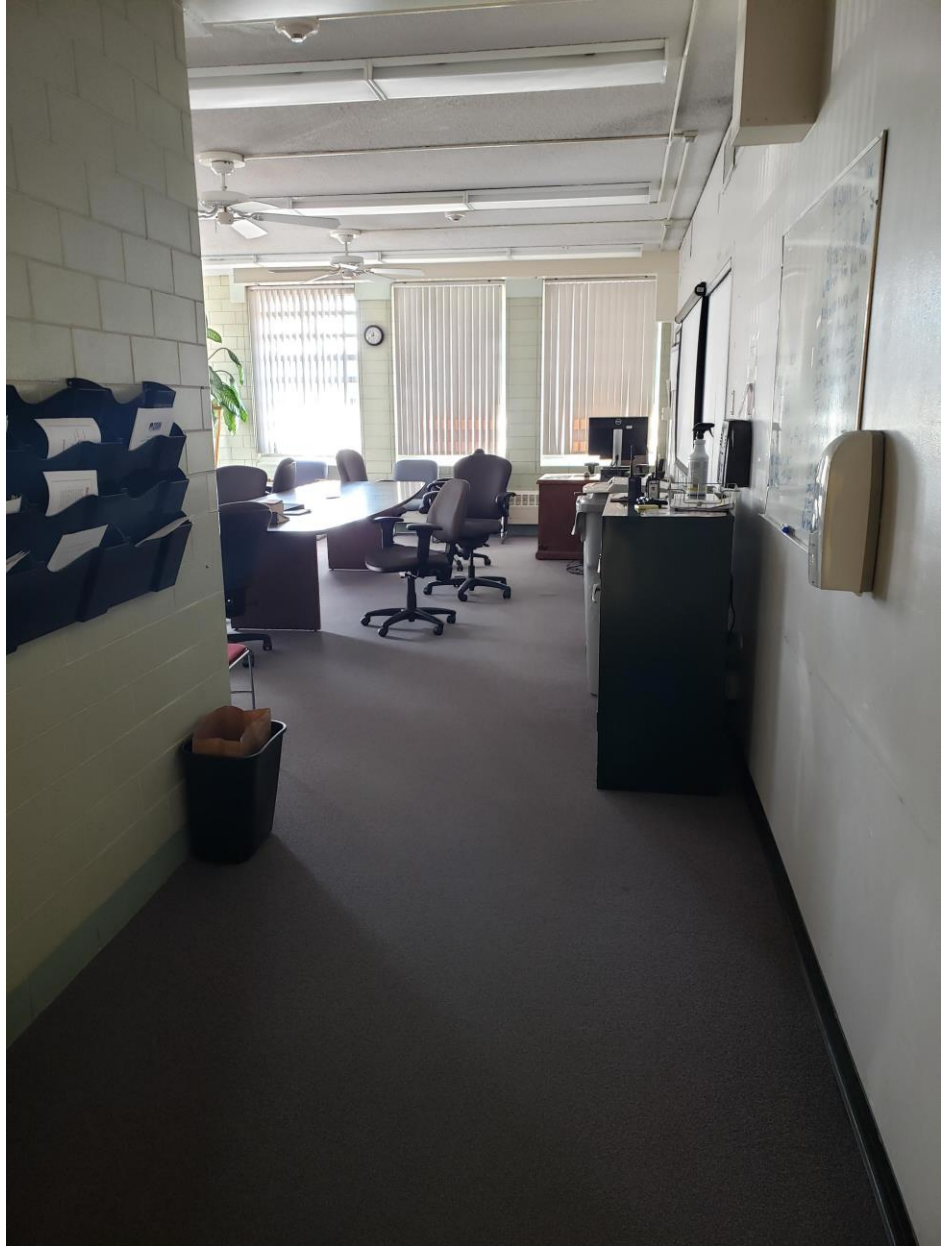




**Building 3:**







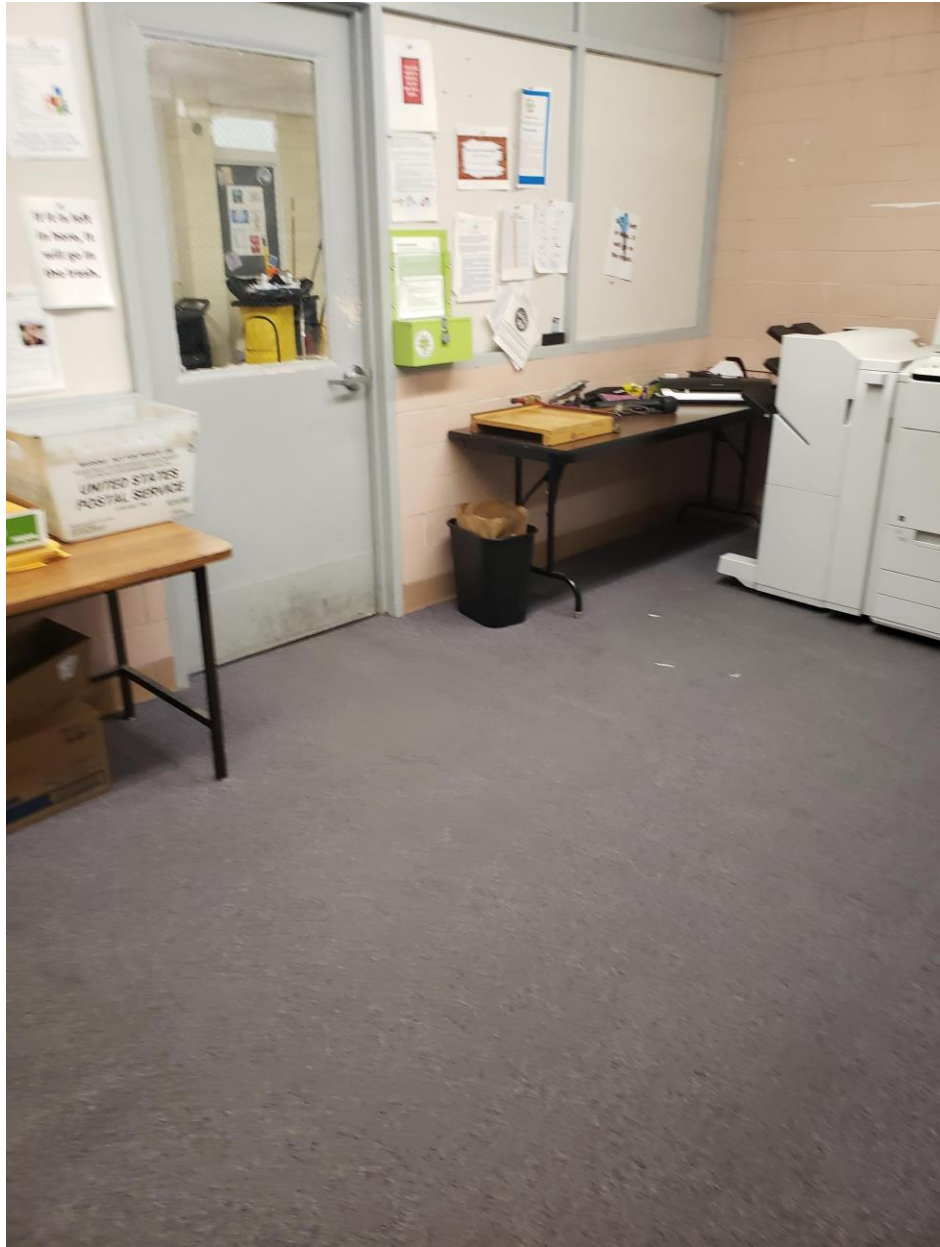


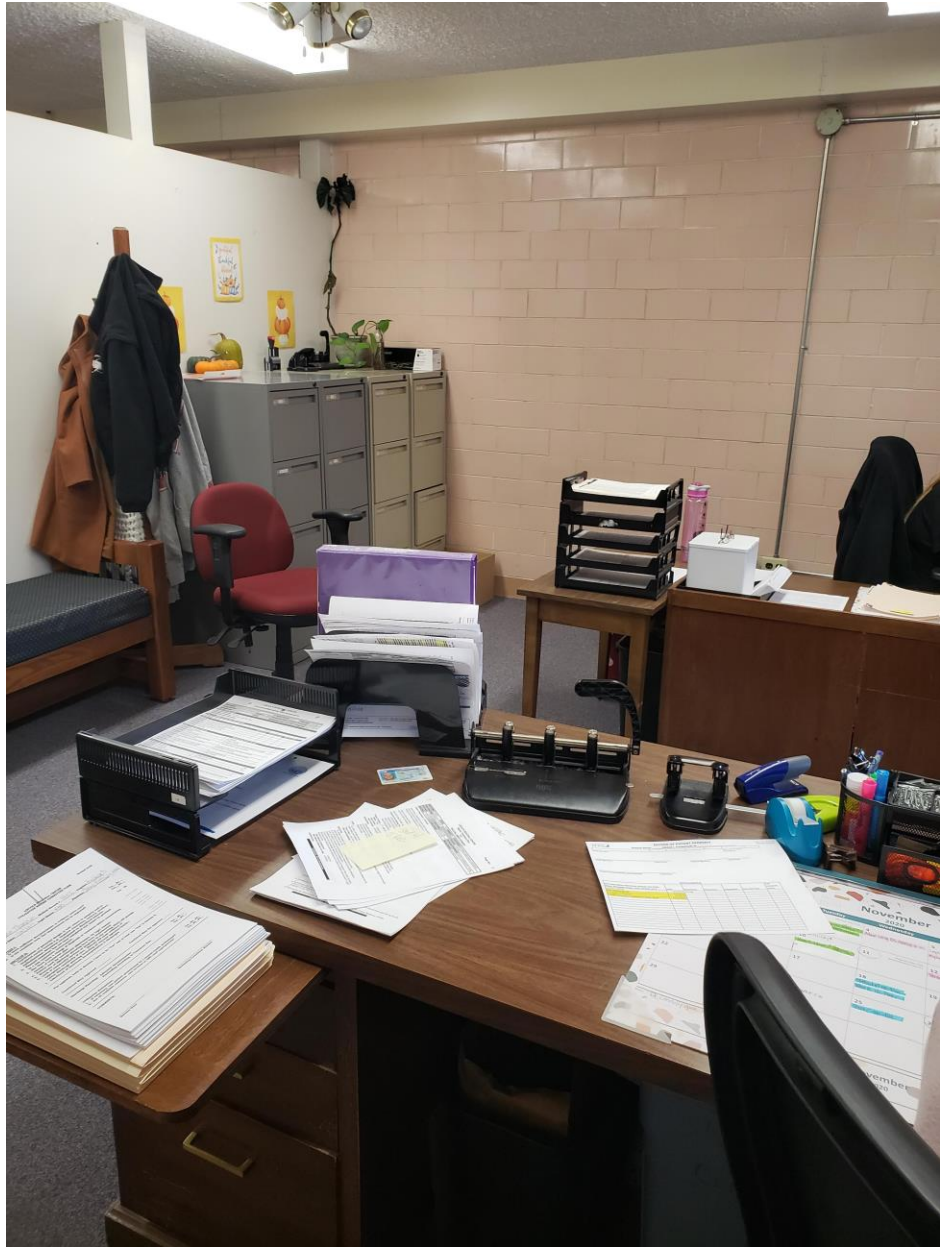




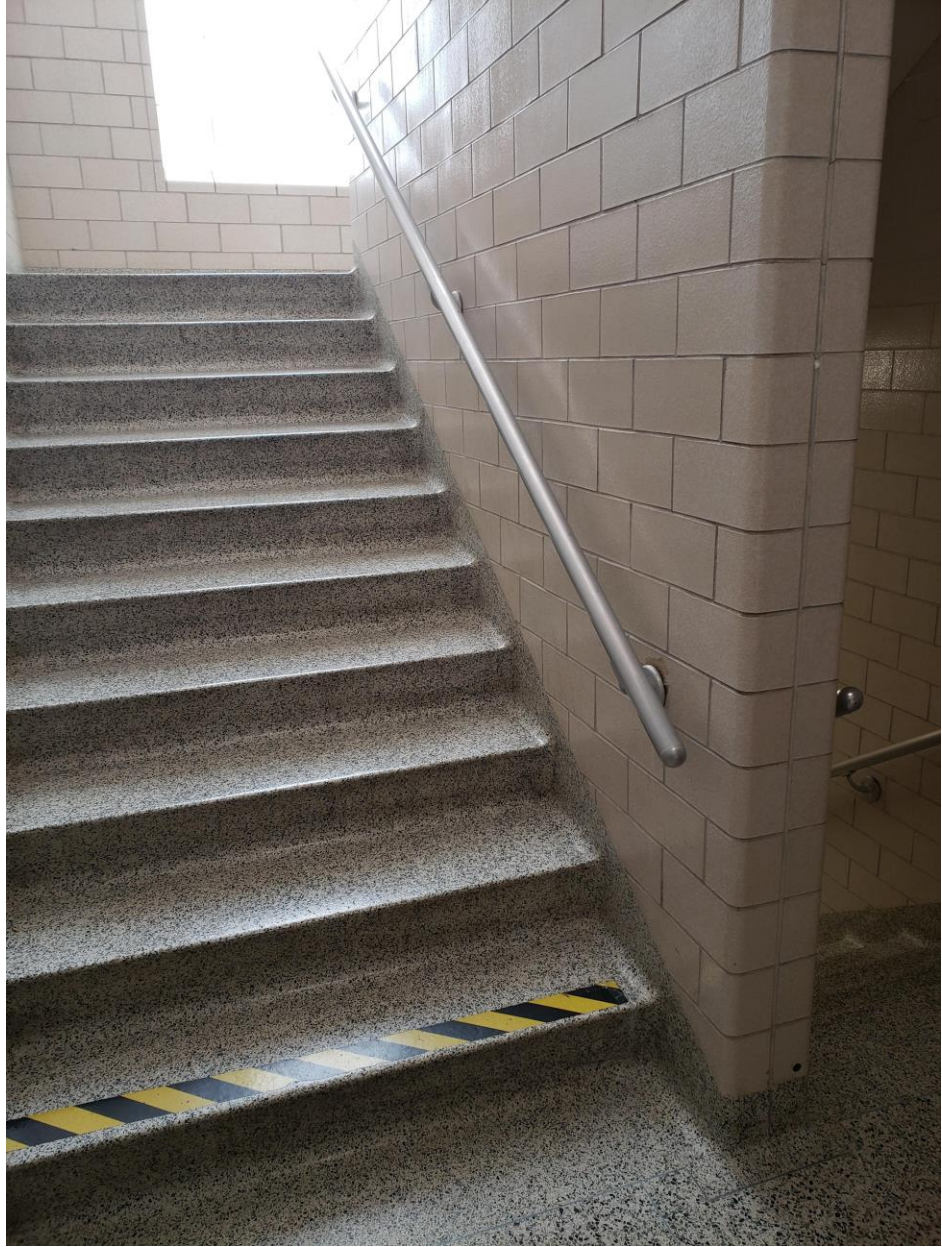




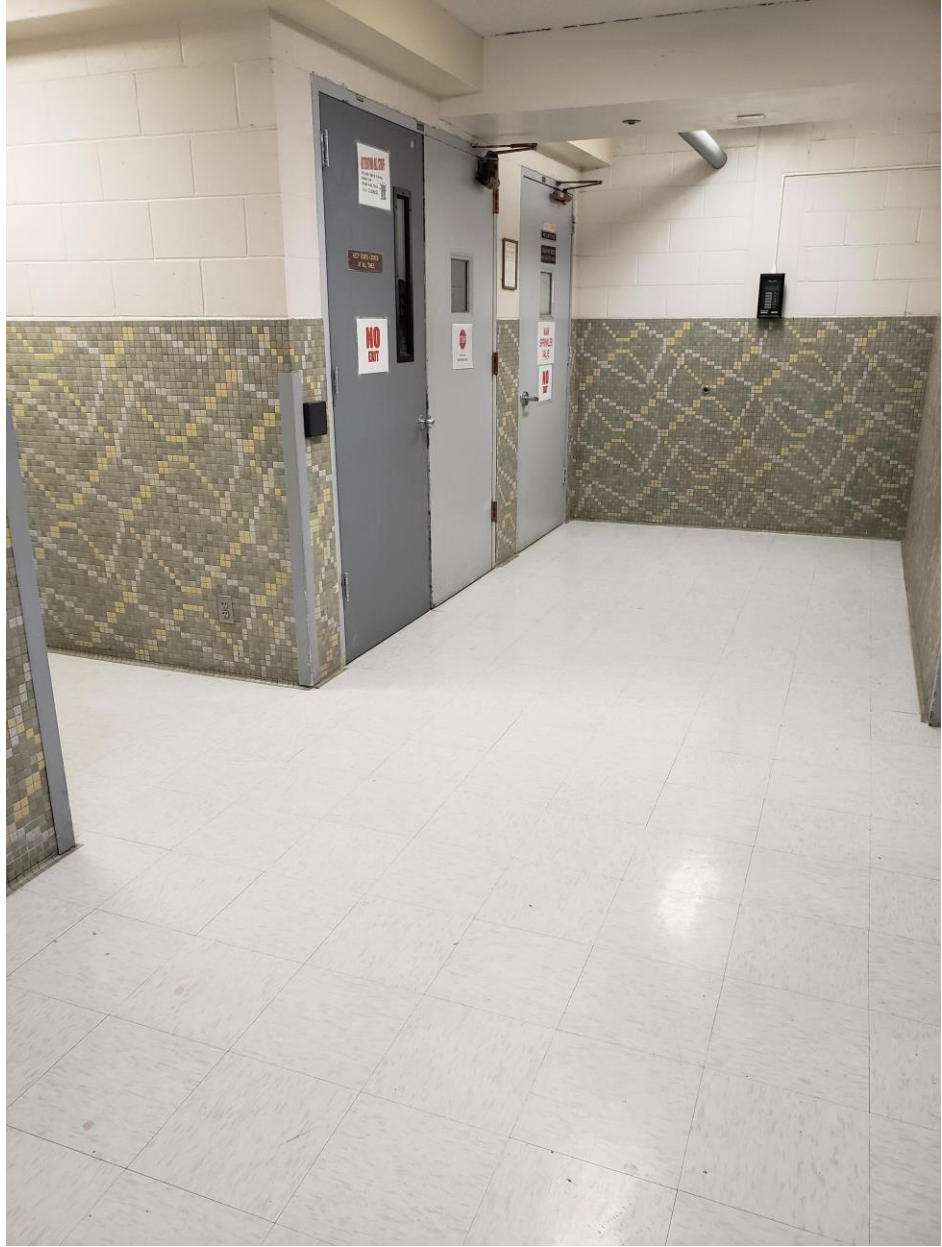




















**Building 5:**







**WARNING:**  
ASSAULTING A HEALTH  
CARE PROFESSIONAL  
WHO IS ENGAGED IN THE  
PERFORMANCE OF HIS  
OR HER OFFICIAL DUTIES,  
INCLUDING STRIKING  
A HEALTH CARE  
PROFESSIONAL WITH  
ANY BODILY FLUID, IS A  
SERIOUS CRIME WHICH  
MAY BE PUNISHABLE AS  
A FELONY.













GYM

MAXIMUM  
OCCUPANCY  
NOT TO EXCEED  
99 PERSONS

Notice  
Date: \_\_\_\_\_  
Time: \_\_\_\_\_  
Location: \_\_\_\_\_  
By: \_\_\_\_\_

Stay safe at all times.  
Stay safe at all times.  
Stay safe at all times.  
Stay safe at all times.











